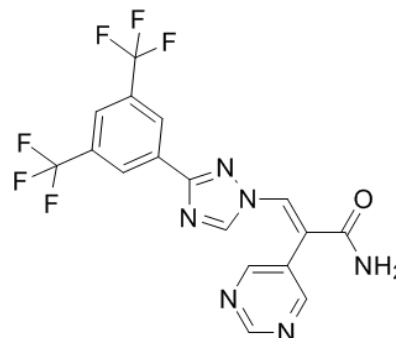


Product Name : Eltanexor
Cat. No. : PC-42150
CAS No. : 1642300-52-4
Molecular Formula : C₁₇H₁₀F₆N₆O
Molecular Weight : 428.2913
Target : Exportin-1 (CRM1,XPO1)
Solubility : DMSO: 4.72 mg/mL



Biological Activity

Eltanexor (KPT-8602) is a second-generation SINE, orally bioavailable **Exportin 1 (XPO1,CRM1)** inhibitor with markedly reduced brain penetration compared to selinexor (30-fold less).

Eltanexor (KPT-8602) inhibits viability of human AML cell lines in vitro with IC₅₀ of 20–211 nM, more active than the first-generation XPO1 inhibitor, selinexor.

Eltanexor (KPT-8602) exhibits greater anti-leukemic efficacy against both leukemic blasts and LICs in AML patient-derived xenograft models, with no effect on normal hematopoietic stem and progenitor cell (HSPC) frequency.

References

Etchin J, et al. *Leukemia*. 2017 Jan;31(1):143-150.

Hing ZA, et al. *Leukemia*. 2016 Dec;30(12):2364-2372.

Vercruyse T, et al. *Clin Cancer Res*. 2017 May 15;23(10):2528-2541.

Caution: Product has not been fully validated for medical applications. Lab Use Only!

E-mail: tech@probechem.com